



Upgrading OmniSwitch 9000E Series Switches to 6.4.3.R01

Overview

This instruction sheet documents how to upgrade OmniSwitch 9000E Series Switches to 6.4.3.R01 software and firmware. The upgrade can be performed using the CLI or WebView. Alcatel-Lucent recommends using WebView to perform the upgrade. For upgrade instructions using the CLI, see [Upgrading with the CLI on page 12](#).

Note. To downgrade a switch (e.g., 6.4.3 to 6.4.2), see [Upgrade/Downgrade Software Matrix on page 17](#).

Prerequisites

This instruction sheet requires that the following conditions exist, or are performed, before upgrading:

- The person performing the upgrade must:
 - be the responsible party for maintaining the switch's configuration
 - be aware of any issues that may arise from a network outage caused by improperly loading this code
 - understand that the switch must be rebooted and network users will be affected by this procedure
 - have a working knowledge of the switch to configure it to accept an FTP connection through the EMP or Network Interface (NI) Ethernet port.
- If the CLI is used, all CLI commands must be executed via a Console Port connection, not through a Telnet session. If you are performing a remote upgrade, the console port must be connected through a terminal server (via Telnet, PuTTY, etc.) in the same location as the switch you are upgrading.

Note. Do not proceed until all the above prerequisites have been met. Any deviation from these upgrade procedures will result in the malfunctioning of the switch. All steps in these procedures should be reviewed before beginning.

Upgrading with WebView

Upgrading OS9000E Series Switches to 6.4.3.R01 consists of the following steps. The steps must be performed in order. You must complete the image file upgrade **before** upgrading the U-Boot and Mini-boot files.

- 1 Upgrading the Image Files.
- 2 Upgrading the U-Boot and Miniboot Files.

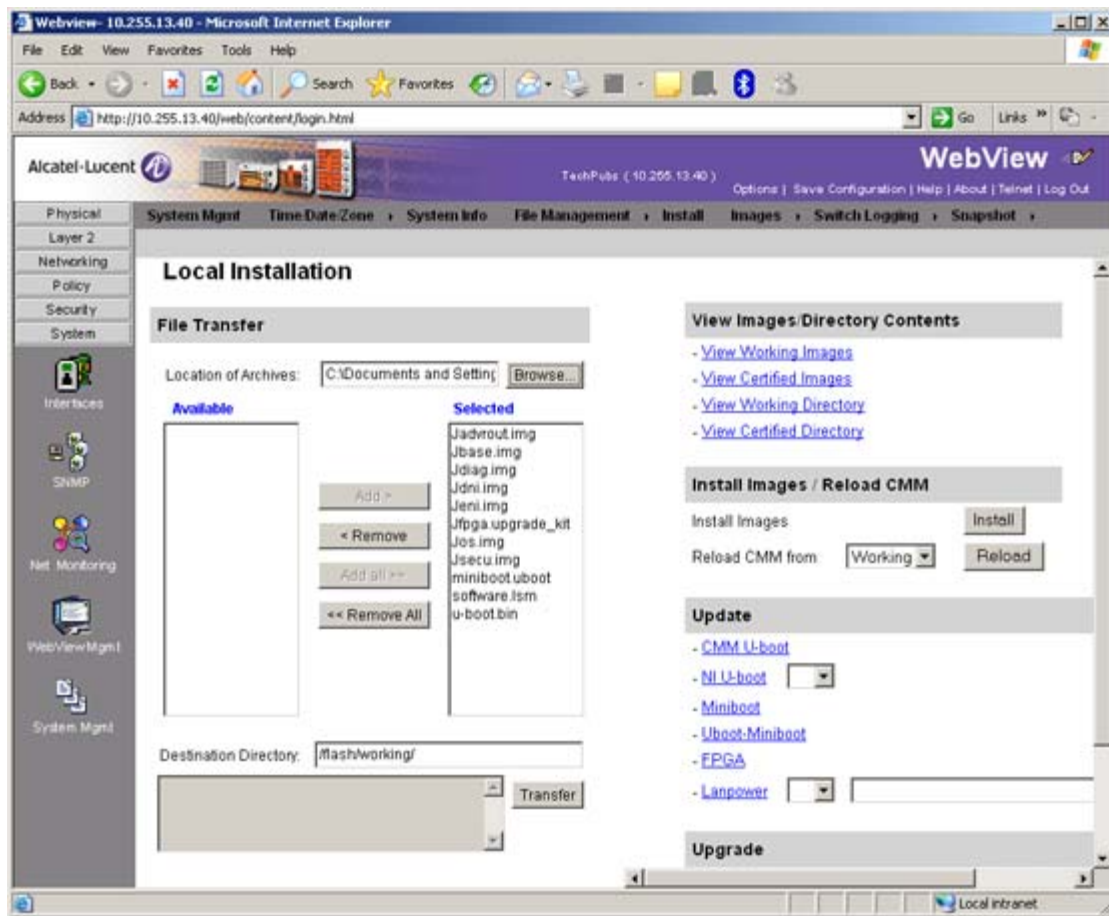
Upgrading the Image Files

Follow the steps below to upgrade the image files to 6.4.3.R01.

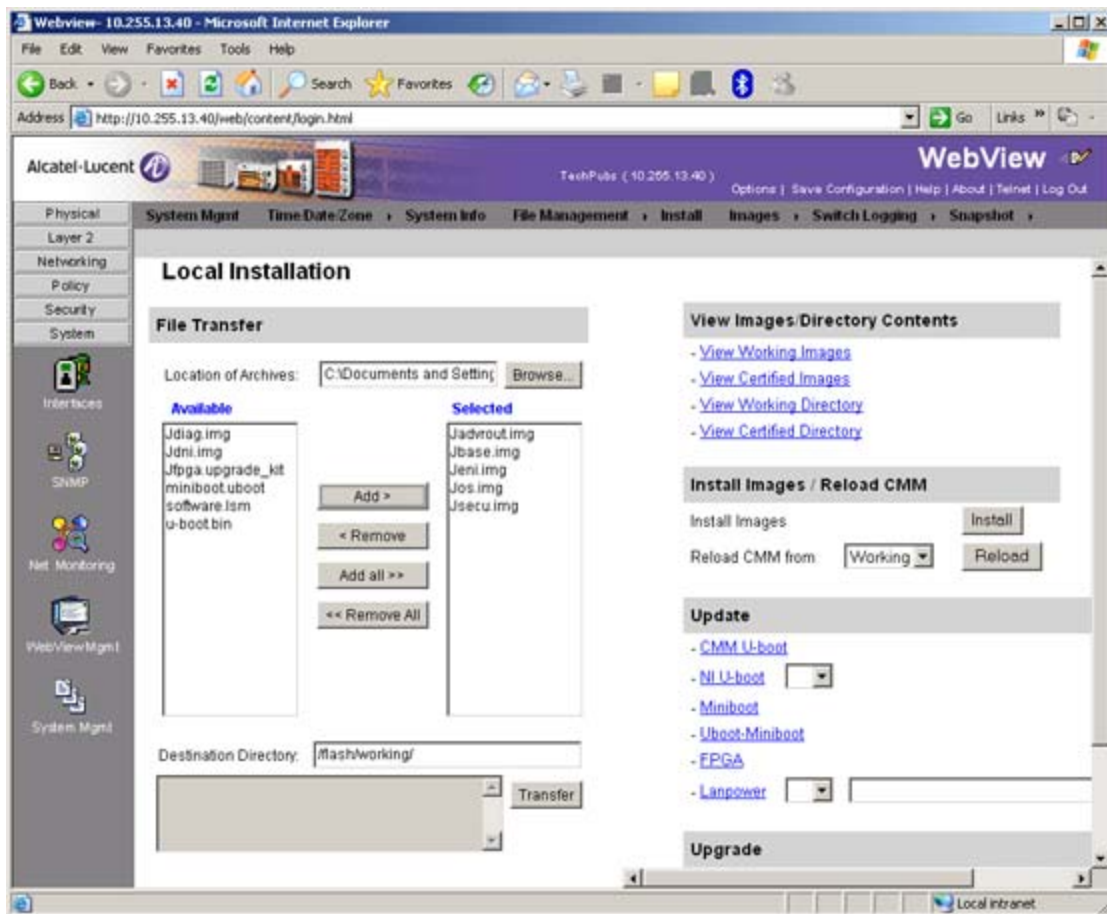
- 1 Download the 6.4.3.R01 upgrade files from the Alcatel-Lucent Service and Support web site to your PC.
- 2 Log into the switch through WebView. (In dual redundant configurations you must log into the primary CMM).

Note. Before proceeding with the remaining steps, make sure that the switch's Web Management Inactivity Timer is set to at least 10 minutes (default setting is 4 minutes). To view and change the setting, go to the **Session Type Parameters** page by selecting **Security > ASA > Sessions > Configuration**.

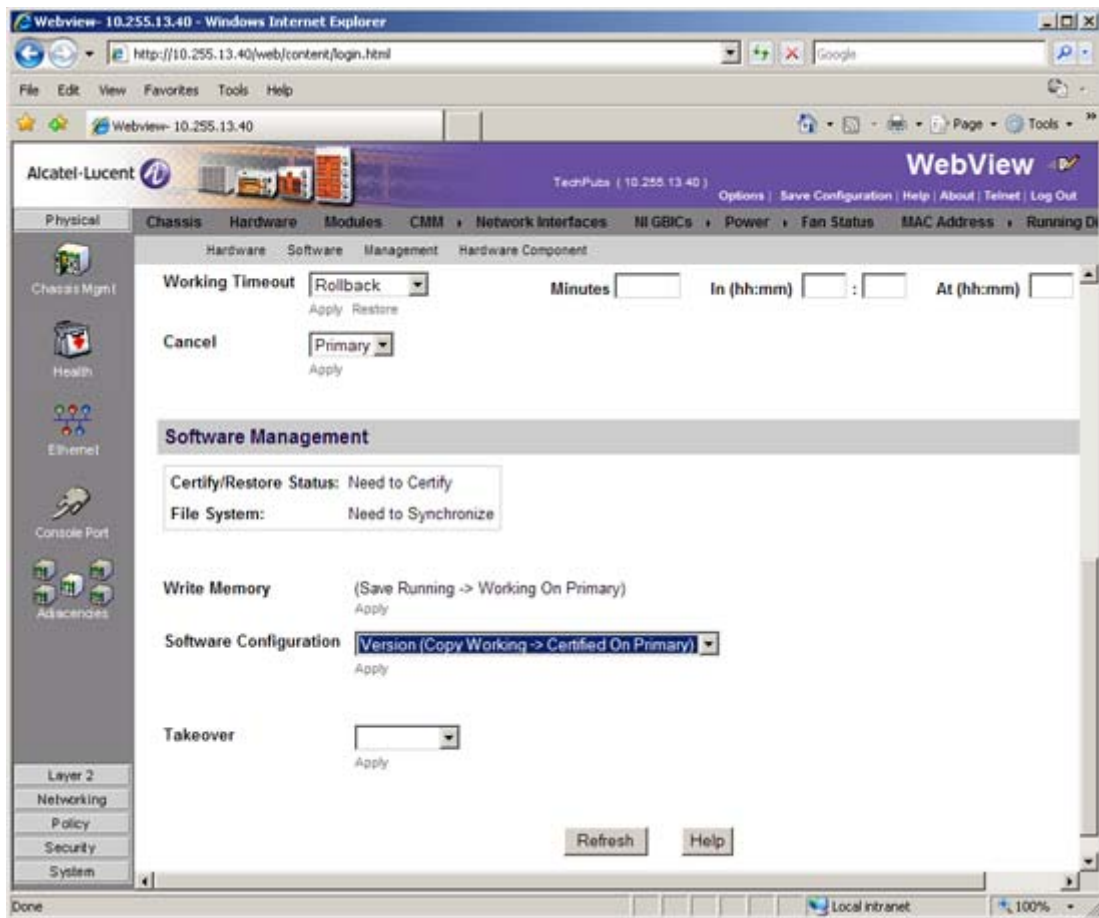
- 3 Select **System > System Mgmt > Install** to locate and FTP the 6.4.3.R01 image files that you downloaded in Step 1. Click on the **Browse** button to locate the files.
- 4 Select one of the files and click **Open**. All of the files will appear in the "Selected" area as shown below.



- 5 Click on the **Remove All** button to move all of the files to the “Available” area; then select the following image files and click the **Add** button to move them back to the “Selected” area as shown below: **Jadvrout.img**, **Jbase.img**, **Jeni.img**, **Jos.img**, **Jsecu.img**.



- 6 Transfer the files to the **flash/working** directory. Make sure the **Destination Directory** is **flash/working**, then click the **Transfer** button. Wait until the process is complete (indicated in the area next to the **Transfer** button - “All files have been transferred successfully”).
- 7 Reload the switch from the Working Directory. In the “Install Images/Reload CMM” area, select **Working** in the **Reload CMM From** field, then click the **Reload** button. Click **OK** at the warning prompt. Wait until the process is complete.
- 8 After the CMM finishes rebooting, log into WebView.
- 9 Copy the files to the Certified Directory and sync the Primary and Secondary CMMs (if applicable). Select **Physical > Chassis Mgmt > CMM > Management** as shown below.



- 10** In the **Software Configuration** field, select **Copy Working -> Certified on Primary** for switches with a single CMM, or **Copy Working -> Certified & Synchronize with Secondary** for switches with a secondary CMM, then click **Apply**.

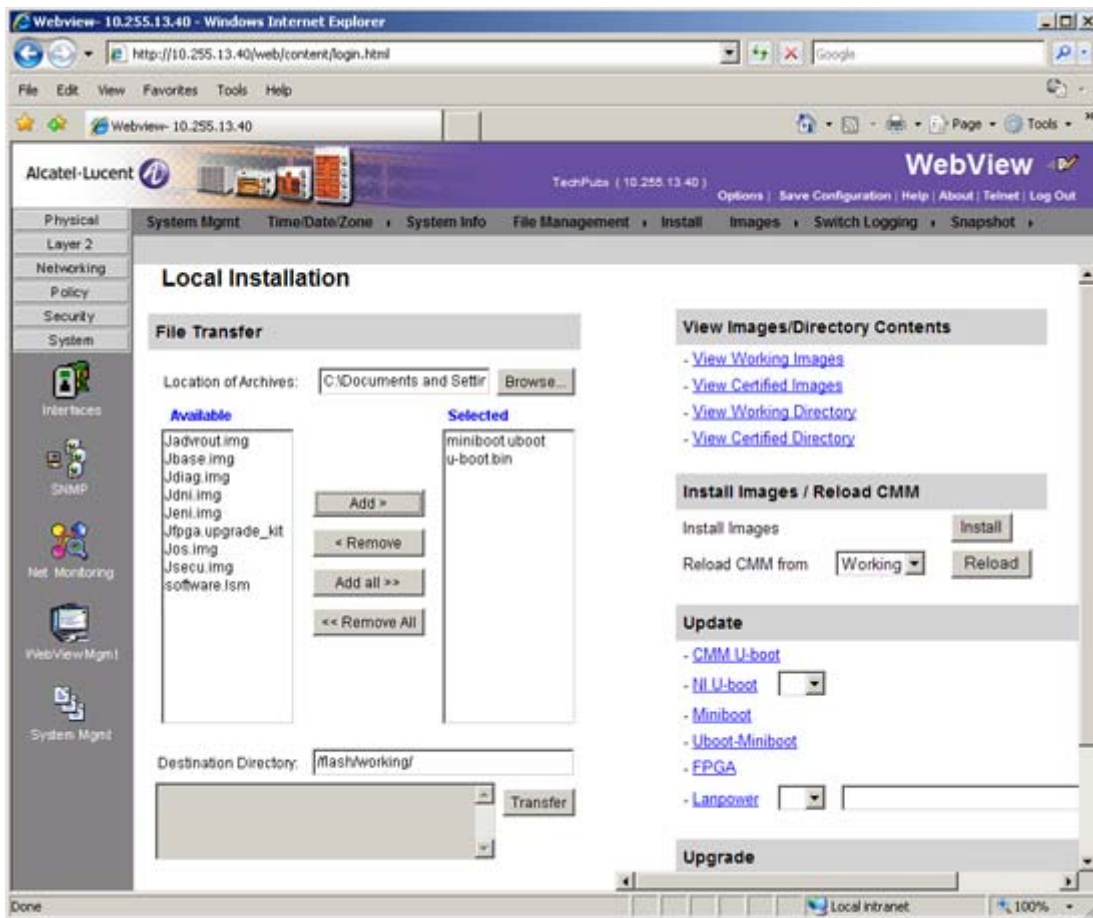
The switch will copy the files from the Working to the Certified Directory and synchronize the CMMs (if applicable). This command should **not** be interrupted.

Upgrading the U-Boot and Miniboot Files

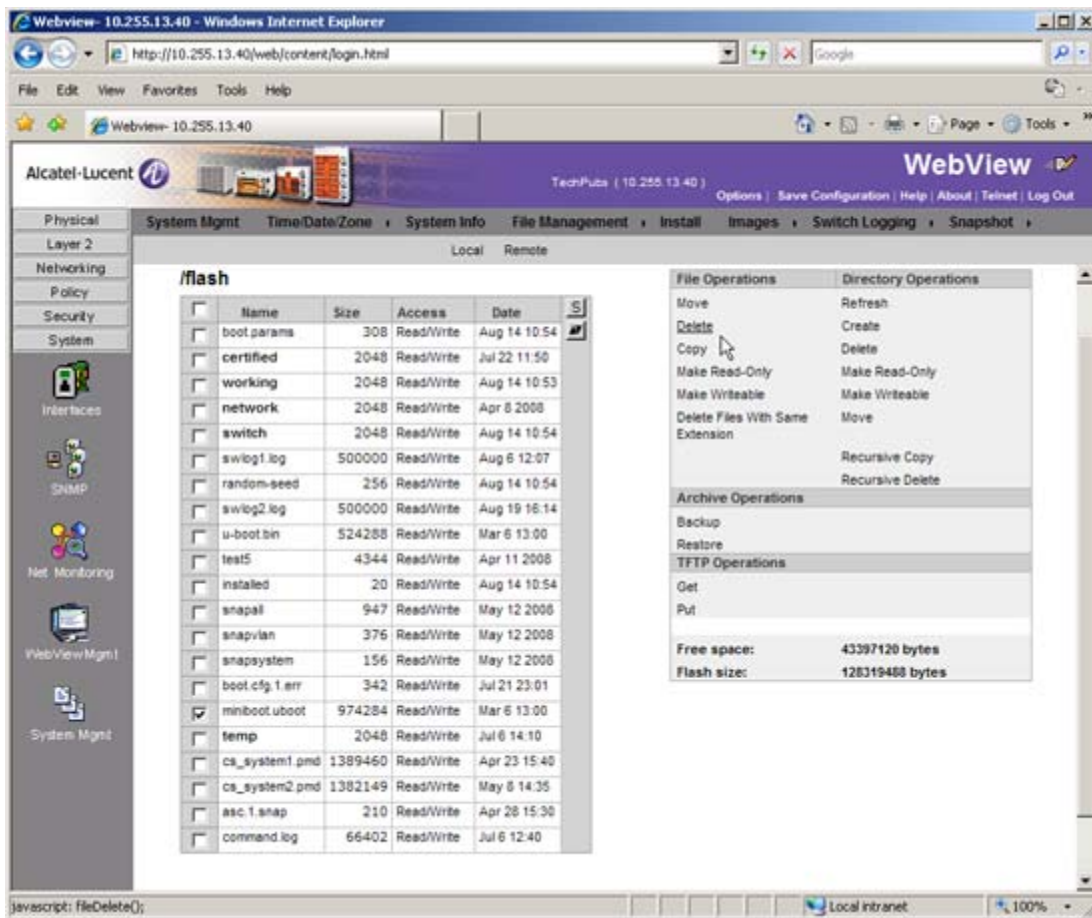
Follow the steps below to upgrade the U-Boot and Miniboot files. U-Boot and Miniboot version **6.4.3.479.R01** is required for the 6.4.3.R01 upgrade.

- 1** Download the applicable upgrade files from the Alcatel-Lucent Service and Support website to your PC.
- 2** Log into the switch through WebView. (In dual redundant configurations you must log into the primary CMM.)

Note. If you have not already done so, make sure that the switch's Web Management Inactivity Timer is set to at least 10 minutes (default setting is 4 minutes). To view and change the setting, go to the **Session Type Parameters** page by selecting **Security > ASA > Sessions > Configuration**.



- 6 Transfer the files to the **/flash** Directory. Make sure the **Destination Directory** is **/flash**, then click the **Transfer** button. Wait until the process is complete (indicated in the area next to the **Transfer** button - "All files have been transferred successfully").
- 7 In the "Update" area, click on **Uboot-Miniboot**, then click **OK** at the confirmation prompt. This will upgrade the Uboot and Miniboot files on all of the CMMs and the NIs. The upgrade progress is indicated in the upper right corner of the screen. When the upgrade is complete, the following message appears: "set operation finished successfully."
- 8 Reload the switch from the Working Directory. In the "Install Images/Reload CMM" area, select **Working** from the **Reload CMM From** field, then click the **Reload** button. Click **OK** at the warning prompt. Wait until the process is complete.
- 9 After verifying that the upgrade was successful (see [Verifying the Upgrade with WebView on page 8](#)), delete the **miniboot.uboot** and **uboot.bin** files from the Flash Directory by selecting **System > System Mgmt > File Management > Local**, as shown below.

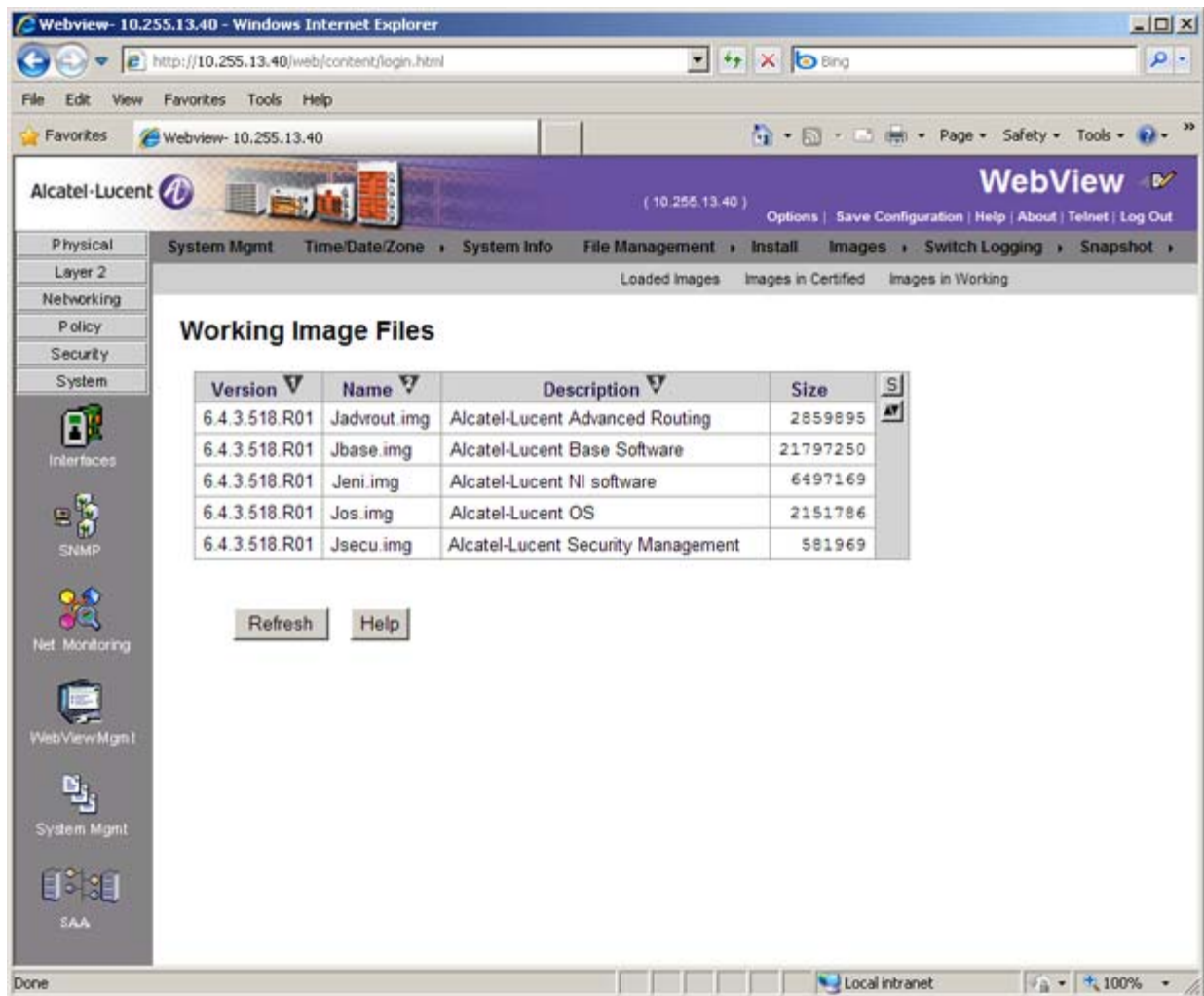


- 10 Check the box next to the **miniboot.uboot** file, select **Delete** in the **File Operations** box, then click **OK** at the confirmation prompt. Repeat to delete the **u-boot.bin** file.

Verifying the Upgrade with WebView

Verifying the Software Upgrade

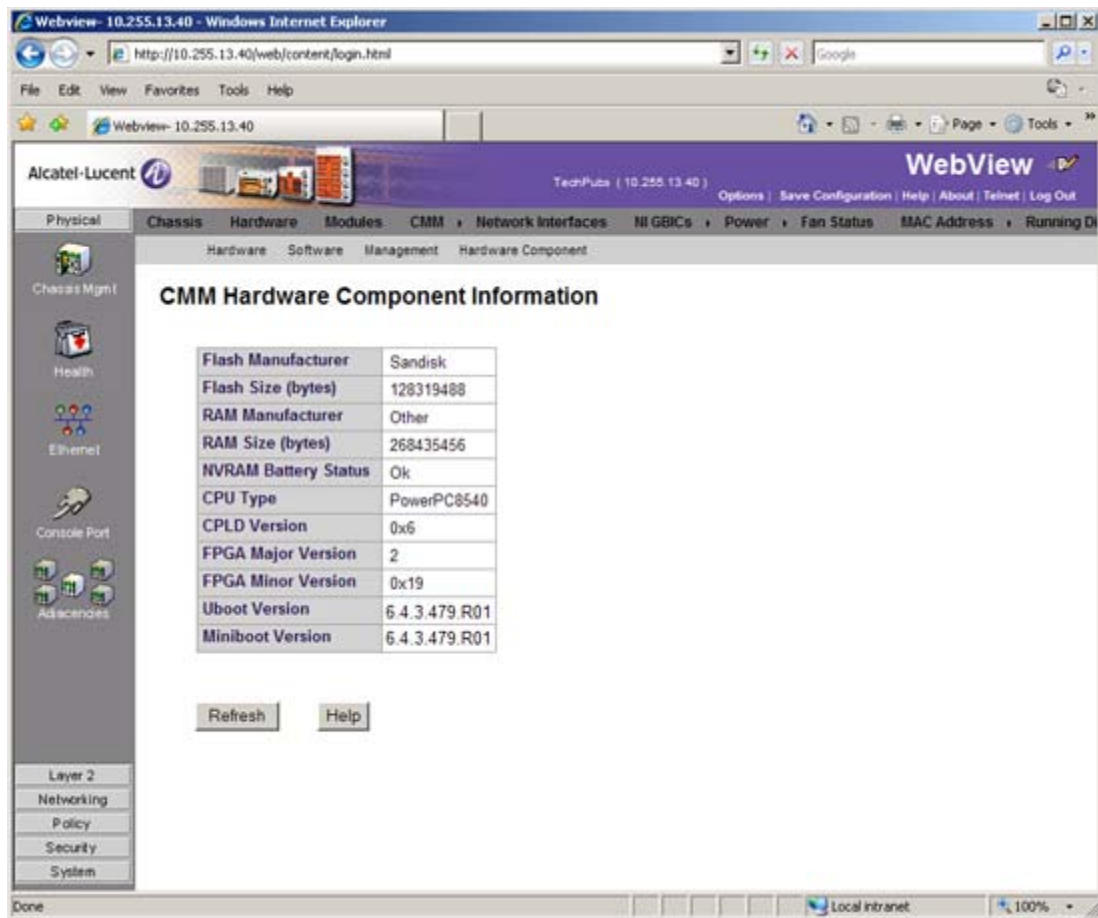
To verify that the software was successfully upgraded, go to the **Loaded Image Files** page by selecting **System > System Mgmt > Images > Loaded Images** as shown below.



In addition, you should also select **System > System Mgmt > Images > Images in Certified** and **System > System Mgmt > Images > Images in Working** to verify that Certified and Working directories were successfully upgraded.

Verifying the U-Boot and Miniboot Upgrade

To verify that the U-Boot and Miniboot files were successfully upgraded on the CMM, go to the **CMM Hardware Component Information** page by selecting **Physical > Chassis Mgmt > CMM > Hardware Component**, as shown below.

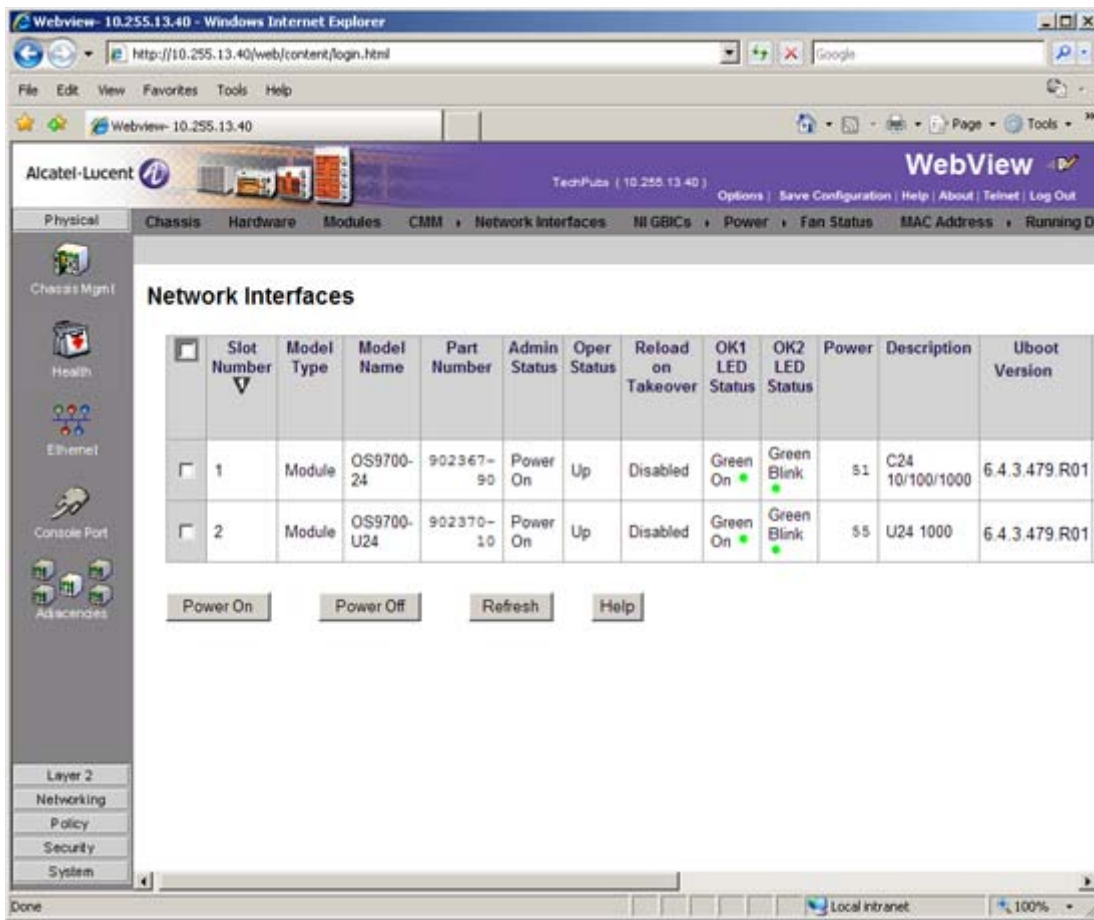


The screenshot displays the Alcatel-Lucent WebView management interface for a switch. The browser window title is "WebView- 10.255.13.40 - Windows Internet Explorer" and the address bar shows "http://10.255.13.40/web/content/login.html". The interface includes a navigation menu on the left with options like "Physical", "Chassis Mgmt", "Health", "Ethernet", "Console Port", and "Adjacencies". The main content area is titled "CMM Hardware Component Information" and contains a table with the following data:

Flash Manufacturer	Sandisk
Flash Size (bytes)	128319488
RAM Manufacturer	Other
RAM Size (bytes)	268435456
NVRAM Battery Status	Ok
CPU Type	PowerPC8540
CPLD Version	0x6
FPGA Major Version	2
FPGA Minor Version	0x19
Uboot Version	6.4.3.479.R01
Miniboot Version	6.4.3.479.R01

Below the table are "Refresh" and "Help" buttons. The status bar at the bottom indicates "Done" and "Local intranet".

To verify that the U-Boot file was successfully upgraded on the switch's NIs, go to the **Network Interfaces** page by selecting **Physical > Chassis Mgmt > Network Interfaces**, as shown below.



Upgrading with the CLI

Upgrading OS9000E Series Switches to 6.4.3.R01 consists of the following steps. The steps must be performed in order. You must complete the image file upgrade **before** upgrading the U-Boot and Mini-boot files.

- 1 Upgrading the Image Files.
- 2 Upgrading the U-Boot and Miniboot Files.

Upgrading the Image Files

Follow the steps below to upgrade the image files to 6.4.3.R01.

- 1 Download the 6.4.3.R01 upgrade files from the Alcatel-Lucent Service and Support web site to your PC.
- 2 FTP the following 6.4.3.R01 image files to the **/flash/working** directory of the primary CMM:
Jadvrout.img, Jbase.img, Jeni.img, Jos.img, Jsecu.img.
- 3 Log into the switch. In dual redundant configurations, you must log into the primary switch.
- 4 Reload the switch from the working directory.
`-> reload working no rollback-timeout`
- 5 After the switch finishes rebooting, log into the switch.
- 6 Copy the image files from the Working Directory to the Certified Directory.
 - If you have a **single CMM** switch enter:
`-> copy working certified`
 - If you have **redundant CMMs** enter:
`-> copy working certified flash-synchro`

The switch will copy the files from the Working to the Certified Directory and synchronize the CMMs (if applicable). This command should not be interrupted.

Upgrading the U-Boot and Miniboot Files

Follow the steps below to upgrade the U-Boot and Miniboot files. U-Boot and Miniboot version **6.4.3.479.R01** is required for the 6.4.3.R01 upgrade.

- 1** Download the applicable upgrade files from the Alcatel-Lucent Service and Support web site to your PC.
- 2** FTP the **miniboot.uboot** and **u-boot.bin** files to the **/flash** directory on the primary CMM.
- 3** Execute the following CLI command to update the U-Boot and Miniboot files on the switch.

```
-> update uboot-miniboot
```

Sample output for "update uboot-miniboot" ->

```
WED APR 7 17:29:09 : SYSTEM (75) info message:
+++ ---->SSACTION_UPDATE_UBOOT_MINIBOOT
WED APR 7 17:29:09 : CSM-CHASSIS (103) info message:
+++ == CSM == Update bootrom on all slots
+++ == CSM == sysUpdate begin
WED APR 7 17:29:10 : FTP (82) info message:
+++ Session 0 New Connection, Client Address 127.2.66.1
+++ Get /flash/u-boot.bin!
+++ Session 0 Ending
WED APR 7 17:29:13 : SYSTEM (75) info message:
+++ NI 1 software update started
WED APR 7 17:29:20 : SYSTEM (75) info message:
+++ NI 1 software update completed -- file /flash/u-boot.bin copied
WED APR 7 17:29:26 : SYSTEM (75) info message:
+++ NI 4 software update started
WED APR 7 17:29:37 : SYSTEM (75) info message:
+++ NI 4 software update completed -- file /flash/u-boot.bin copied
WED APR 7 17:30:44 : CSM-CHASSIS (103) info message:
+++ == CSM == sysUpdate end
+++ == CSM == timer_r:duplex---- session end ----
+++ == CSM == UPDATE COMPLETED
```

- 4** When the "UPDATE COMPLETED" message appears, delete the miniboot and u-boot files from the **/flash** directory, and the reload the switch from the **working** directory:

```
-> reload working no rollback-timeout
```

The upgrade is now complete. See Verifying the Upgrade with the CLI below for information on verifying the upgrade.

Verifying the Upgrade with the CLI

Verifying the Software Upgrade

To verify that the software was successfully upgraded to 6.4.3.R01, use the **show microcode** command as shown below.

```
-> show microcode
```

Package	Release	Size	Description
Jbase.img	6.4.3.518.R01	18216628	Alcatel-Lucent Base Software
Jadvrout.img	6.4.3.518.R01	2745699	Alcatel-Lucent Advanced Routing
Jos.img	6.4.3.518.R01	2049916	Alcatel-Lucent OS
Jeni.img	6.4.3.518.R01	5417699	Alcatel-Lucent NI software
Jsecu.img	6.4.3.518.R01	564947	Alcatel-Lucent Security Management

Verifying the U-Boot and Miniboot Upgrade

To verify that the U-Boot and Miniboot files were successfully upgraded on the CMM, use the **show hardware info** command as shown below.

```
-> show hardware info
```

CPU Type	: Motorola MPC8540 ADS,
Flash Manufacturer	: SanDisk SDCFJ-128
Flash size	: 128319488 bytes (122 MB),
RAM Manufacturer	: 0x00000040 - Other,
RAM size	: 268435456 bytes (256 MB),
NVRAM Battery OK ?	: YES,
CPLD rev	: 0x6,
FPGA major rev	: 0x2,
FPGA minor rev	: 0x19,
uboot Version	: 6.4.3.479.R01,
uboot-miniboot Version	: 6.4.3.479.R01,
Backplane type	: Regular mode,

To verify that the NI modules were successfully upgraded, use the **show ni** command as shown below.

```
-> show ni

Module in slot 1

  Model Name:                OS9700-24,
  Description:               C24 10/100/1000,
  Part Number:               902367-90,
  Hardware Revision:         C15,
  Serial Number:             G25Q0772,
  Manufacture Date:          JUN 28 2006,
  Firmware Version:          ,
  Admin Status:              POWER ON,
  Operational Status:        UP,
  Power Consumption:         51,
  Power Control Checksum:    0xd872,
  CPU Model Type   :         Motorola MPC8540 ADS,
  MAC Address:              00:d0:95:ec:d1:c8,
  ASIC - Physical 1:        BCM56504_A1,
  FPGA - Physical 1:        0005/00,
  UBOOT Version :          6.4.3.479.R0,
  UBOOT-miniboot Version :   No Miniboot,
  POE SW Version :          n/a

Module in slot 2

  Model Name:                OS9700-U24,
  Description:               U24 1000,
  Part Number:               902370-10,
  Hardware Revision:         C13,
  Serial Number:             G0410042,
  Manufacture Date:          FEB 23 2006,
  Firmware Version:          ,
  Admin Status:              POWER ON,
  Operational Status:        UP,
  Power Consumption:         55,
```

```
Power Control Checksum:      0xb156,  
CPU Model Type   :          Motorola MPC8540 ADS,  
MAC Address:        00:d0:95:e1:6e:7a,  
ASIC - Physical 1:      BCM56504_A1,  
FPGA - Physical 1:      0005/B9,  
UBOOT Version :          6.4.3.479.R01,  
UBOOT-miniboot Version :    No Miniboot,  
POE SW Version  :         n/a
```

Upgrade/Downgrade Software Matrix

Refer to the matrix below for software compatibility when upgrading/downgrading a 9000E Series Switch to/from Build 6.4.3.R01. For more information, contact Customer Support.

I = Image Files

F= U-Boot/Miniboot

Yes = You can upgrade/downgrade to the next build.

No = You cannot upgrade/downgrade to the next build.

N/A = Not applicable. Build not supported on the model.

Upgrade/Downgrade Matrix 6.4.3.R01 GA I = 6.4.3.R01 GA F = 6.4.3.479.R01		
Build and Supported Software Versions For Each Upgrade		
	6.4.1 GA I = 6.4.1.R01 F = 6.4.1.149.R01	6.4.2 GA I = 6.4.2.R01 F = 6.4.1.149.R01
Model		
9000E	Yes	Yes

Note. Hardware is only backward compatible down to the software that originally supported it. For example, the lowest software version that you can run on a 9000E Series Switch is 6.4.1.R01. Also, when downgrading, make sure to load the applicable U-Boot/Miniboot files. For more information, contact Customer Support.



Alcatel-Lucent
26801 West Agoura Road
Calabasas, CA 91301
(818) 880-3500 FAX (818) 880-3505

US Customer Support: (800) 995-2696
International Customer Support: (818) 878-4507
Internet: <http://eservice.ind.alcatel.com>